

LOUISVILLE **BOLD**

REAL ESTATE &
TRANSPORTATION

SECTION CONTENTS



- Transportation and Connectivity (including Airlift)
- Highway Infrastructure
- Multi-Modal Options
- Fiber and Cell Connectivity
- Sustainability and Energy Efficiency
- Additional Considerations

TRANSPORTATION AND CONNECTIVITY



Greater Louisville is a national and international hub with easy and fast connections.

- Centrally located **within a day's drive of 2/3 of the country's population**
- Short, low-stress daily **commutes that average about 20 minutes**
- **Multi-modal transportation** with investments in sidewalks, bike network and transit to provide residents with real choices, including recent investments in **more than 200 miles of bike lanes and other bike infrastructure**
- Significant investments in transit have led to the **second largest fleet of all-electric buses and a new Bus Rapid Transit line** is set to begin construction in 2018
- Regional air access provides **direct flight connectivity** to both coasts and international destinations

Move Louisville, the city's 25-year strategic transportation plan demonstrates city's commitment to multi-modal transportation and connectivity for residents and businesses. *Move Louisville* recommends \$1.4 billion in investments to maintain infrastructure, improve mobility, improve health and safety and allow for movement of freight. Over the next five years, Louisville will be investing more than \$100 million toward achieving these goals including more bicycle facilities, modernized transit routes and options, improving streetscapes and maintaining safe, quality infrastructure.



Air Service – You can get there from here!

Louisville International Airport (SDF) offers 81 daily departures to 28 nonstop destinations, including:

- 8 daily nonstop flights to New York City
- 9 daily nonstop flights to D.C. area airports
- 51 connecting flights a day by four airlines over 10 hubs to San Francisco
- 56 connecting flights a day by four airlines over 11 hubs to Seattle

165 additional peak-day flights to 56 nonstop destinations are available with an easy 90 minute drive to CVG (Cincinnati/Northern KY International). It currently offers 1 daily nonstop flight to Seattle and 3 daily nonstop flights to San Francisco.

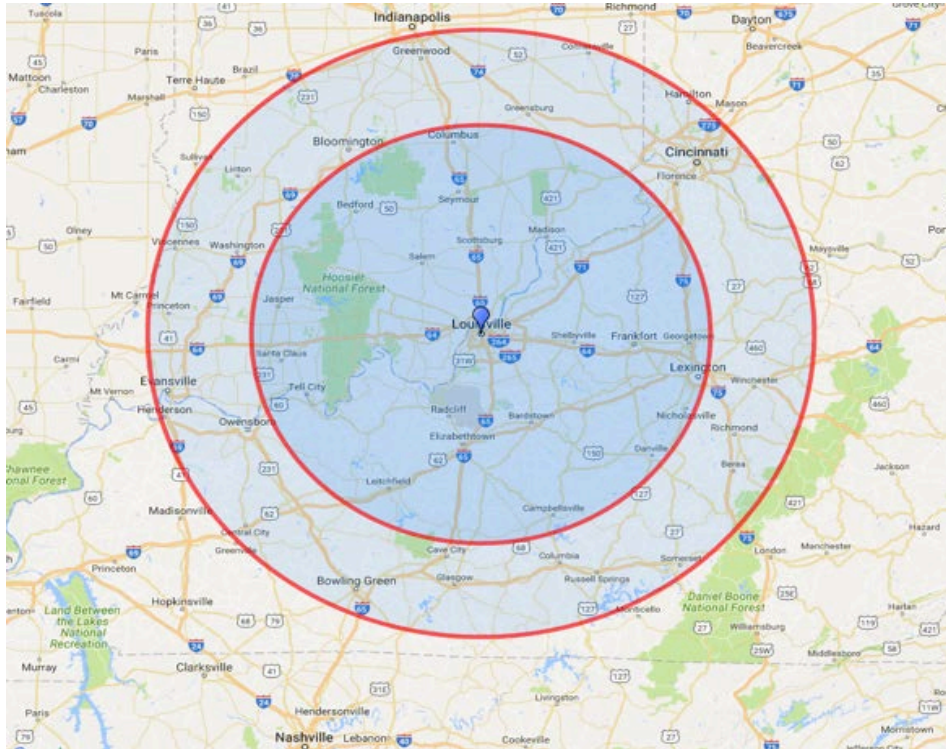
SDF is ready for growth!

In 2017, the airport completed a multi-million dollar terminal enhancement project. Louisville International's 344,673 square foot terminal offers 24 passenger boarding gates with ample room to accommodate new service without new construction. The terminal has a maximum capacity of more than 4 million total passengers. In 2016, the airport served 3.3 million passengers leaving ample room to add new service. With 13 open gates available for use Louisville is well-positioned to accommodate future growth in passenger activity.

The airport has three runways capable of all-weather operations, two of which offer simultaneous operation capabilities. The facility serves a wide variety of aircraft up to and including new Group VI aircraft (B747-8F, A380). The terminal facility can easily handle aircraft up to and including Boeing 757. In 2014, the airport completed a \$40 million taxiway project to better accommodate Group VI aircraft. The airfield has ample capacity to accommodate growth in both commercial and cargo operations in the future.

Louisville Airlift Project – we’re growing our direct options!

SDF’s Catchment Area (the area from which the airport can draw passengers) extends out to a 100-mile radius (up to two-hour drive time) and serves a regional population of over six million people:



The Louisville region has embarked on a new and intensive effort to facilitate new flights at Louisville International Airport (SDF). The Louisville Regional Airlift Development (LRAD) group was formed in 2017 by leading business, community, and government leaders from throughout Louisville as a non-profit, 501(c)(3) corporation.

LRAD’s mission is to facilitate new nonstop flights from SDF to key domestic and international markets. LRAD’s top four domestic target markets include:

- Seattle
- Boston
- Los Angeles
- San Francisco

Additional domestic markets, such as Kansas City, Raleigh/Durham, New Orleans, etc., are targeted in the future. LRAD also will be working to secure new international service.

To support this strategy, LRAD launched its regional fundraising campaign in June 2017. Initially, the campaign seeks to raise \$4 million to support the first two routes with over half of funds to goal raised.

HIGHWAY INFRASTRUCTURE



Regional Transportation Network – People and Freight on the *MOVE*....

The recently completed \$2.4 billion Ohio River Bridges Project constructed two new bridges between Kentucky and Indiana to enhance regional and national connectivity. This generational infrastructure upgrade offers additional capacity to handle a substantial increase in the number of commuters.

Louisville sits at the intersection of three (3) major interstates – I-65, I-64, and I-71 – and enjoys the rare advantage of two (2) interstate loops around the metro region.

Louisville is scheduled to invest more than \$650 million to maintain, enhance, and widen key interstate connections through the region in the upcoming six years.

Our central location and robust highway infrastructure permit us easy connections via road. Drive times from Louisville to:

Indianapolis – 1 hr. 50 mins.

Nashville – 2 hrs. 30 mins

Memphis – 5 hrs. 40 mins

St. Louis – 3 hrs. 50 mins.

Chicago – 4 hrs. 40 mins.

Charlotte – 7 hrs. 30 mins

MULTI-MODAL OPTIONS

- Mass Transit, Public Transportation
- Bicycle – Bike Lanes, Bike Share
- EV charging stations
- River transportation



Mass Transit, Public Transportation

Louisville's regional transit provider, the Transit Authority of River City (TARC), operates 230 buses on 41 routes throughout the Louisville region. TARC also operates the nation's second largest all-electric bus fleet in addition to hybrid-electric buses and clean-diesel buses.

Significant investments in TARC's service have been on the forefront of the community's capital plans. Louisville is investing more than \$30 million over the next three years to add **bus rapid transit service (BRT)** and provide better bus access to critical employment centers. In addition, Louisville is in the beginning stages of planning the next generation of the community's transit system including a second bus rapid transit route.

Biking more your style? Hop on!

Louisville's extensive network of buffered bike lanes, dedicated lanes, and sharrows provide a safe and easy way to get around on two wheels. The bike network connects central business district locations to major feeder lanes from edge neighborhoods and offers connection points to the 100-mile Louisville Loop shared-used path around the city.

Louisville is a Bicycle Friendly Community and has earned the **Silver-level rating from the League of American Cyclists** thanks to significant investments in bicycle facilities.

Louisville is adding 25 miles of bike infrastructure annually. Louisville currently has a little more than 200 miles of bicycle infrastructure falling into the following categories:

- 80 miles of on-street bike lanes
- 65 miles of shared-use paths and off-road trails
- 59 miles of neighborways

Took the bus to work and want to bike to lunch? Bike Share!

Louisville's new **Bike Share program, LouVelo**, launched in May 2017 with **27 stations and 305 bikes** serving the central business district, Old Louisville, NuLu, Butchertown, and the University of Louisville. The system has been popular with residents and visitors alike as more than 7,000 rides have occurred in the first 3 months of operations. Plans to expand the system are in process.



Got an all-electric vehicle? Charge up!

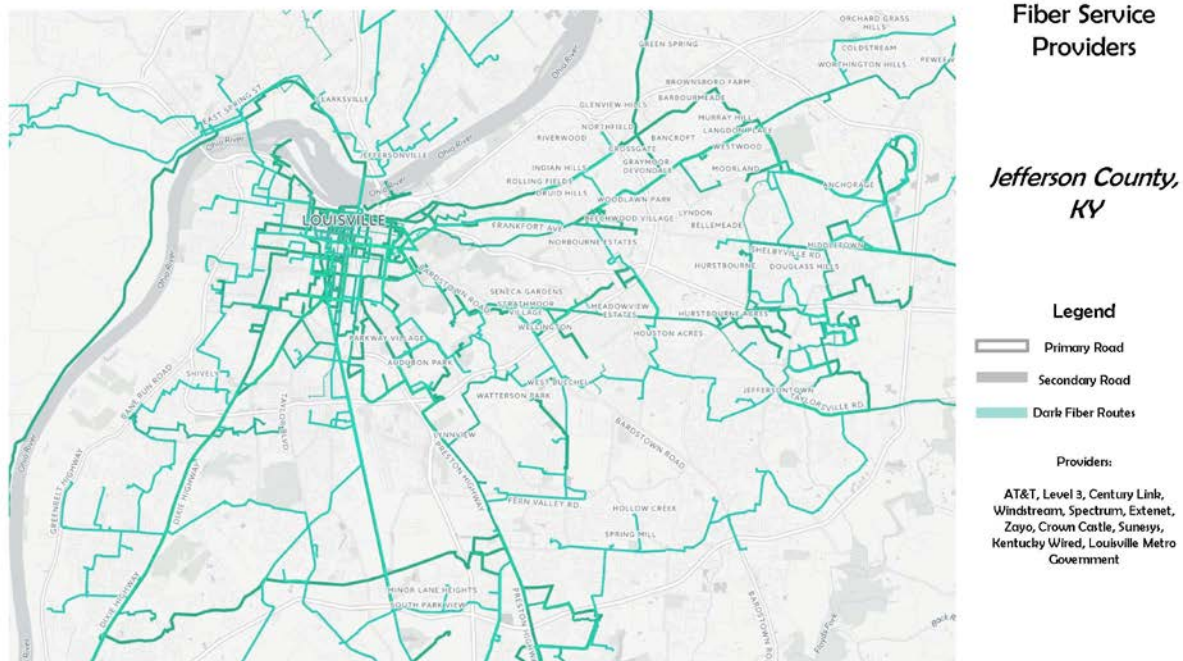
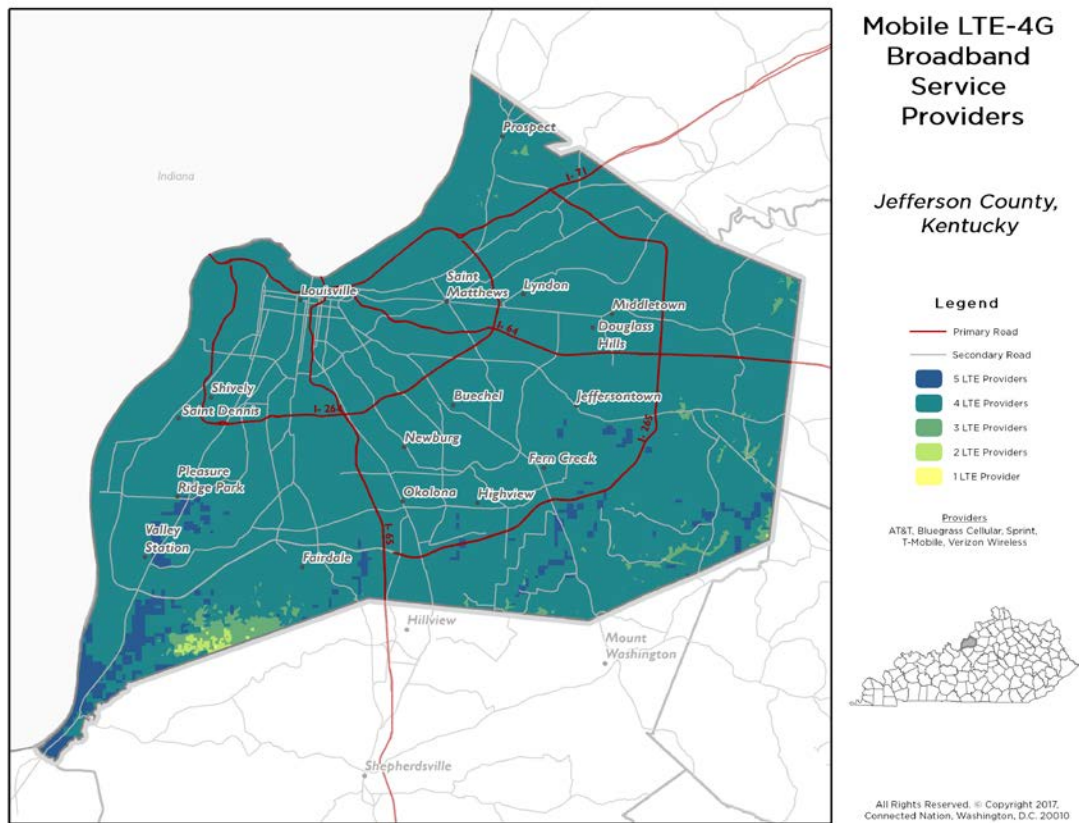
Over **thirty electric vehicle (EV) charging stations** are located across the community with more on the way as demand escalates. Parking Authority of River City (PARC), has installed charging stations at six garages that are available free of charge for cars using the garage and many EV stations now take the place of on-street meters.

Over the River we will go!

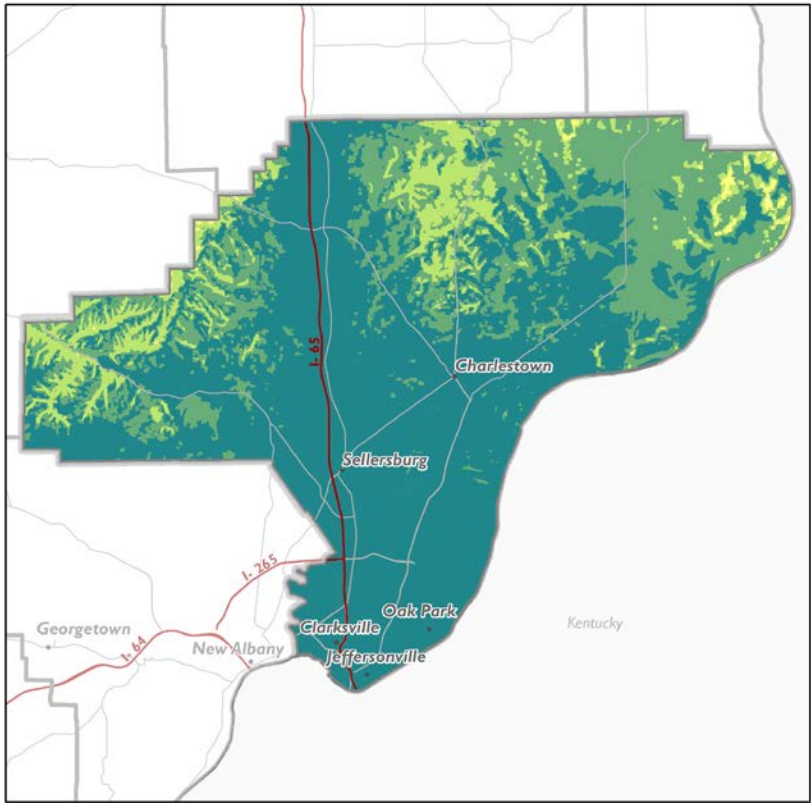
In addition to our beautiful and highly efficient TWO new Ohio River Bridges and TWO downtown walking/cycling bridges, Louisville proposes a new **Water Taxi service**..

FIBER/CELL CONNECTIVITY – COVERAGE MAPS

Louisville Metro/Jefferson County, Kentucky



Clark County, Indiana



Mobile LTE-4G
Broadband
Service
Providers

Clark County,
Indiana

Legend

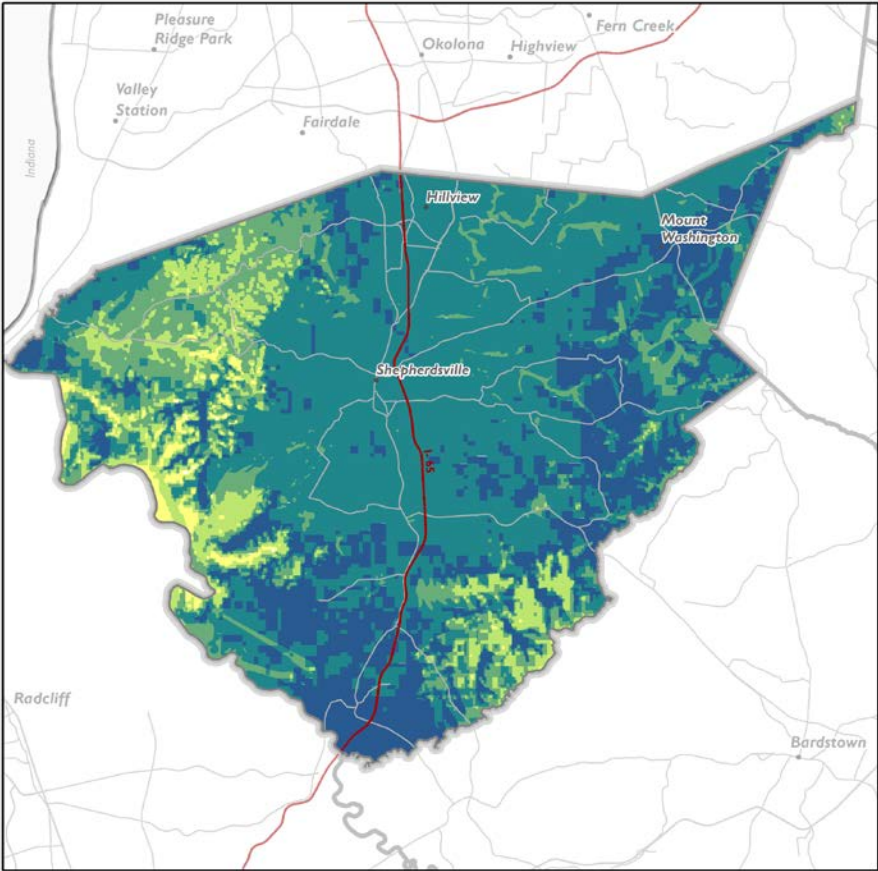
- Primary Road
- Secondary Road
- 4 LTE Providers
- 3 LTE Providers
- 2 LTE Providers
- 1 LTE Provider

Providers:
AT&T, Sprint, T-Mobile,
Verizon Wireless



All Rights Reserved. © Copyright 2017,
Connected Nation, Washington, D.C. 20010

Bullitt County, Kentucky



Mobile LTE-4G
Broadband
Service
Providers

*Bullitt County,
Kentucky*

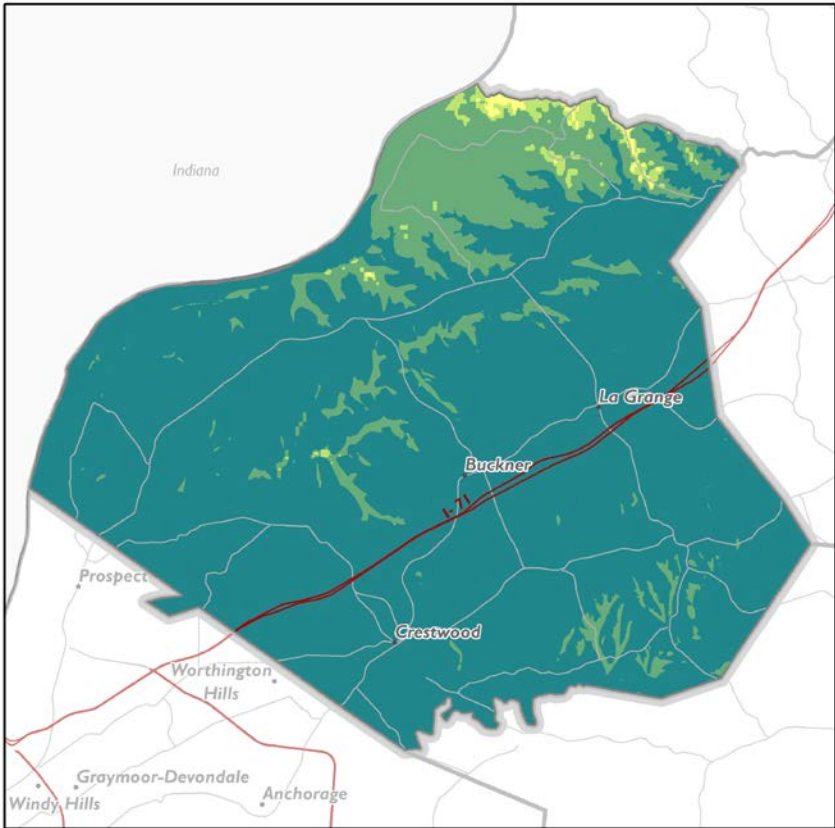
Legend

- Primary Road
 - Secondary Road
 - 5 LTE Providers
 - 4 LTE Providers
 - 3 LTE Providers
 - 2 LTE Providers
 - 1 LTE Provider
- Providers
AT&T, Bluegrass Cellular, Sprint,
T-Mobile, Verizon Wireless



All Rights Reserved. © Copyright 2017,
Connected Nation, Washington, D.C. 20010

Oldham County, Kentucky



Mobile LTE-4G
Broadband
Service
Providers

Oldham County,
Kentucky

Legend

- Primary Road
- Secondary Road
- 4 LTE Providers
- 3 LTE Providers
- 2 LTE Providers
- 1 LTE Provider

Providers:
AT&T, Sprint, T-Mobile,
Verizon Wireless



All Rights Reserved. © Copyright 2017,
Connected Nation, Washington, D.C. 20010

SUSTAINABILITY AND ENERGY EFFICIENCY

A PARTNERSHIP PROPOSAL FOR AMAZON HQ2



We look forward to welcoming Amazon HQ2 to Louisville with innovative sustainability practices to enhance the HQ2 campus and decrease its environmental footprint. Partnership opportunities include the following:

Zero Waste Campus

Louisville is a cutting edge dry waste facility that will support HQ2 as a **zero waste campus**. A zero waste initiative can be implemented through the proven local dry waste method paired with a compost program.

Geothermal Heating and Cooling

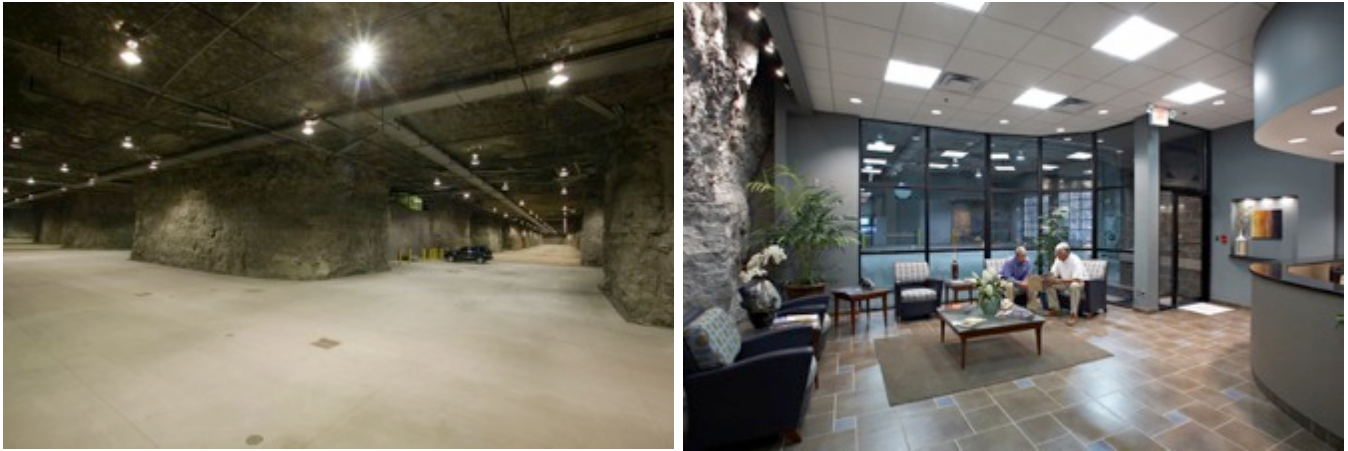
New construction locations for HQ2 phases II-IV create excellent opportunities for installing a **geothermal heating and cooling system**. For over thirty years Louisville's riverfront Galt House Hotel has operated one of the world's largest geothermal systems that eliminates consumption of more than 5.6 million kilowatts per year. Similarly, the Fort Knox military base, just south of Louisville, features the largest geothermal installation in the country. The base achieved its goal of being 100% energy independent in 2015.

Biofilter Project

Drawing on the success of the local Green Heart vegetative medicine program, we will team with Amazon to develop a **biofilter project** in an area where its employees would gain the greatest health benefit from a living air filtration system. The biofilter will be designed to be a place for employees to enjoy green space, relax and experience the health benefits of vegetative medicine. The city can further team with Amazon on the forestation plans for HQ2 to ensure that it will contribute to increasing the citywide tree canopy and that the appropriate species are selected. Our recent urban tree canopy assessment data will be a valuable tool to identify the environmental co-benefits of Amazon's forestation efforts.

ADDITIONAL CONSIDERATIONS

Underground Storage



The Louisville area boasts two underground data storage facilities: StrataSpace, located in Oldham County, and Louisville Underground, located just three miles from Louisville International Airport (SDF).

Both facilities feature extremely stable temperatures, enormous available spaces (700,000 square feet at Strataspace, more than 3 million square feet at Louisville Underground), and excellent utility access. Both offer unparalleled physical security for data storage equipment, as well as reduced demands for cooling thanks to their natural temperature stability. StrataSpace's Enterprise Level III or IV data center even offers geothermal cooling and a LEED platinum certification.

Existing Amazon locations – Air Hub, logistics

Amazon already has a large footprint in our area. Kentucky and Indiana are home to more than fifteen Amazon fulfillment and customer service centers, employing more than 16,000 people.

Amazon's new state-of-the-art \$1.49 billion Prime Air hub at the Cincinnati/Northern Kentucky International Airport (CVG) will expand the company's longstanding presence in Kentucky.

This density of Amazon locations makes the greater Louisville bi-state region the natural home for HQ2.